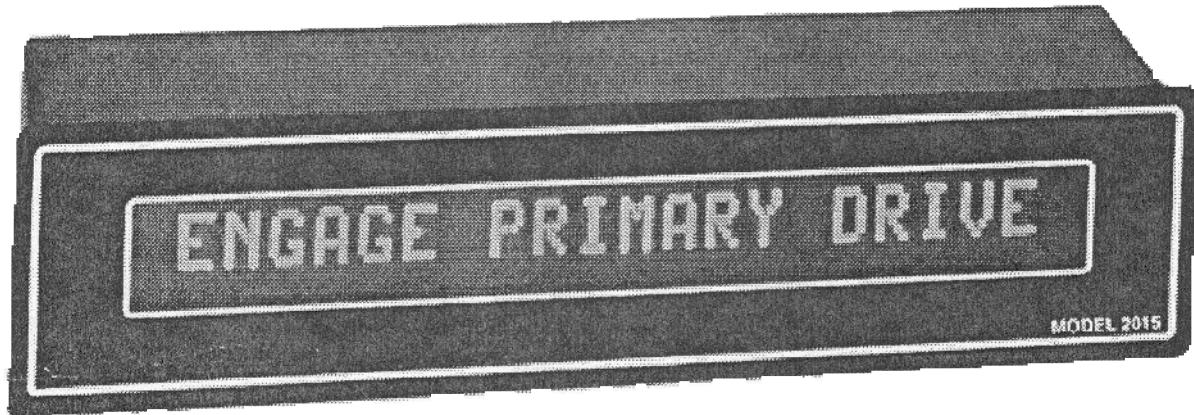


2000 Series One Line Alphanumeric Panel Display

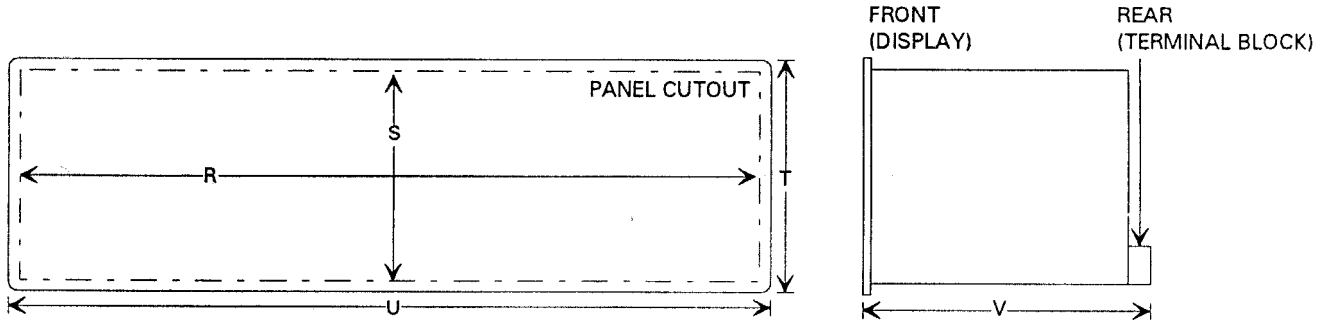


2000 Series displays have the following common features:

- Designed to interface with virtually all PLCs and Industrial Computers.
- Green 5 x 7 dot matrix vacuum fluorescent display with 1 line of 20 characters.
- Character sets of 128 ASCII characters.
- Rugged panel mount enclosure available with gasket.
- Parallel ports accepts 3.5 to 9 VDC or 9 to 30 VDC sink or source signals.
- Available with 120 VAC, 5 VDC, or 10 to 30 VDC power supply.
- Canned message displays are programmable from IBM® PC's or compatibles with free programming software - [download VDP](#).
- Canned message displays feature flexible variable data handling; fixed, flashed, or scrolled display modes; chain or queueing up to 8 messages.
- Three display character sizes - Model 2005 - 0.2 inch; Model 2009 - 0.35 inch; Model 2015 - 0.59 inch.

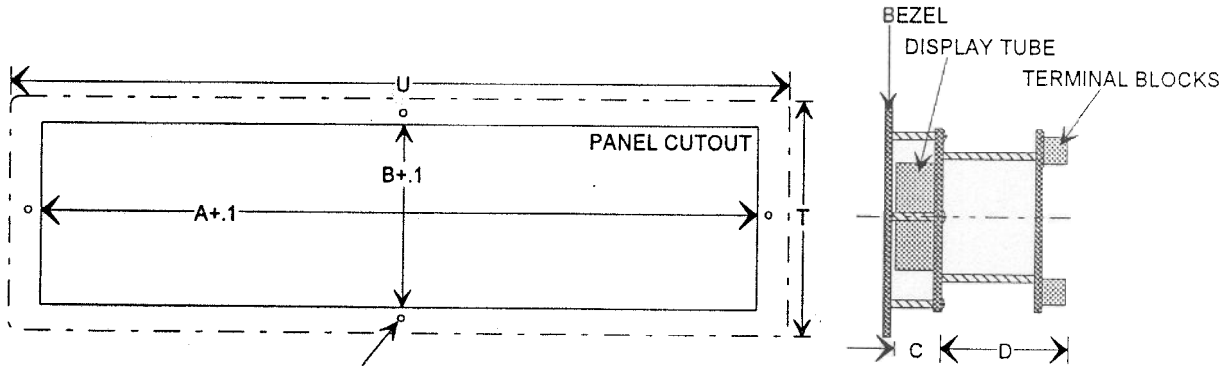
Housing Option "C" (Panel Mount Case)

The fully enclosed panel mount unit can be mounted through the front panel cutout and fastened to the panel with two side clips (provided). An optional gasket provides front panel Nema 12 sealing.



Housing Option "B" (Bezel Mount)

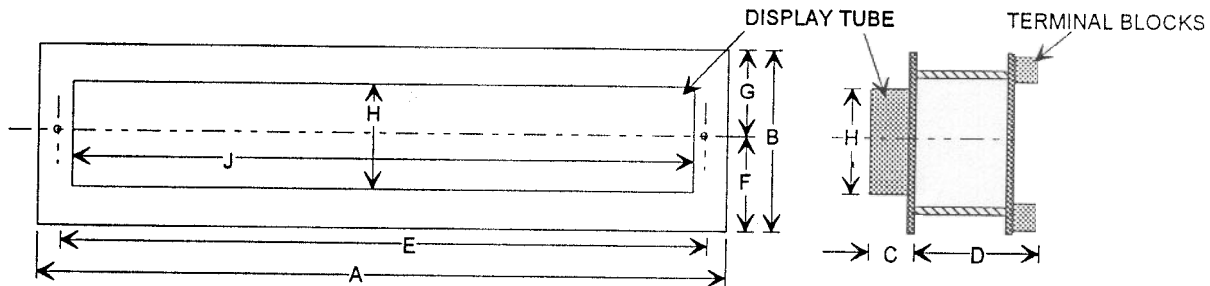
The bezel with attached display and logic boards can be mounted through the front of a panel cutout and fastened to the panel with four integral studs.



(4) 6-32 studs centered and 0.15 from bezel edge.
Mounting studs of bezel fit through clearance holes drilled in panel.

Housing Option "O" (No Housing)

The display and logic board can be mounted to the rear of a panel by using the circuit board mounting holes (6-32 clearance holes) provided on each side of the display tube.



Model	Character Height	A	B	C	D	E	F	G	H	J	R	S	T	U	V
2005S	0.20	6.3	2.1	0.5	1.6	6.0	1.3	0.9	1.1	5.4	6.9	2.5	2.8	7.2	4.0
2009S	0.35	9.1	2.4	0.6	1.6	8.7	1.3	1.1	1.4	8.2	9.7	2.8	3.1	10.0	4.6
2015S	0.59	12.7	2.5	0.7	1.6	12.3	1.3	1.3	1.5	11.7	13.3	2.9	3.2	13.6	4.6

Note: All dimensions are in inches.